

# Flow indicators for pipelines with ends for welding

## Series S-VA in stainless steel

## Series S-St in carbon steel



Sight flow indicator, series S-VA, type S-VA 80

### Application:

VETROLUX® sight flow indicators, series S-VA / S-St with the new DIN lengths, are used for the observation of a flow of liquid in tubes and pipelines. Visibility may be considerably enhanced by combination with our proven light fittings for hazardous and safe areas. (Please see our respective leaflets.)

### Operating conditions:

Nominal pressure: 10 bar (PN 10)  
16 bar (PN 16) on request

Vacuum

Maximum temperature: 280 °C (with borosilicate glass discs)  
150 °C (with sodium silicate glass discs)

### Standard materials:

Body material:	Series S-VA:	1.4571 (= AISI 316 Ti)
	Series S-St:	Carbon steel RSt 37-2
Cover flanges:	Series S-VA:	Stainless steel
	Series S-St:	Carbon steel RSt 37-2
Socket head screws:	Series S-VA:	A4-70
	Series S-St:	Zinked 5.6
Glass discs:	Borosilicate glass to DIN 7080 (Standard)	
	Sodium silicate glass to DIN 8902 (Option)	
Gaskets product side:	Graphite	
cover side:	KLINGERSil C4400	

Other materials are available on request.

### Options:

- Security version with double glazing

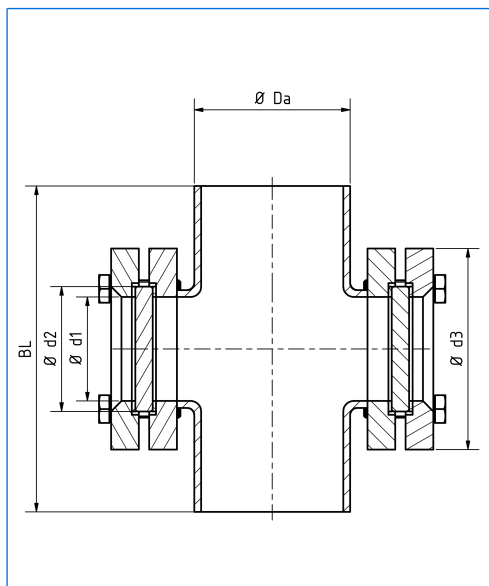
### Remarks:

When enquiring or ordering please **always** state the nominal pressure (PN) required.

### Ordering example:

1 piece VETROLUX® sight flow indicator for welding into position, body in stainless steel 1.4571 (= AISI 316 Ti), nominal pressure 10 bar (PN 10), nominal diameter DN 25:

1 piece S-VA 25-316 Ti-10-Graphite-KLINGERSil C4400



Typ	DN	BL	ø Da	ø d <sub>3</sub>	ø d <sub>1</sub>	Number and size of bolts	ø d <sub>2</sub>	s
S-VA 25	25	160	33,7	□ 70	23	4 x M10	45	10
S-St 25								
S-VA 40	40	200	48,3	□ 85	39	4 x M12	63	10
S-St 40								
S-VA 50	50	230	60,3	□ 85	44	4 x M12	63	10
S-St 50								
S-VA 80	80	310	88,9	135	64	4 x M12	80	12
S-St 80								
S-VA 100	100	350	114,3	150	80	4 x M12	100	15
S-St 100								
S-VA 125	125	400	139,7	150	80	4 x M12	100	15
S-St 125								
S-VA 150	150	480	168,3	190	100	4 x M16	125	20
S-St 150								
S-VA 200	200	600	219,1	210	125	8 x M16	150	25
S-St 200								
S-VA 250	250	730	273,0	235	150	8 x M16	175	25
S-St 250								
S-VA 300	300	850	323,3	235	150	8 x M16	175	25
S-St 300								

Branch office / exclusive agent:

Do you wish for more information about our wide range of light fittings for use in hazardous or safe areas, about our range of circular sightglasses to DIN 28120/28121, screwed sightglasses similar to DIN 11851, rectangular or D-ended sightglasses, pipeline flow indicators, sideways or centrally operated wipers, hinged sightglasses, spraying devices, camera systems for hazardous areas or our complete sight and light-glass units VETROLUX®? Are you interested in other types, special versions or different protection degrees? If yes, please contact us, our branch office or our local agents – it is our business! You will find the necessary indications about our sales network on the Internet.

All dimensions in mm. Subject to changes without preliminary notice.



# MAX MÜLLER AG

PROCESS ILLUMINATION AND VISUAL OBSERVATION SYSTEMS

Hagmattstrasse 19 • CH - 4123 Allschwil / Switzerland

Telephone +41 61 487 92 92 • Telefax +41 61 487 92 99

www.maxmuellerag.com E-Mail: blt@maxmuellerag.com